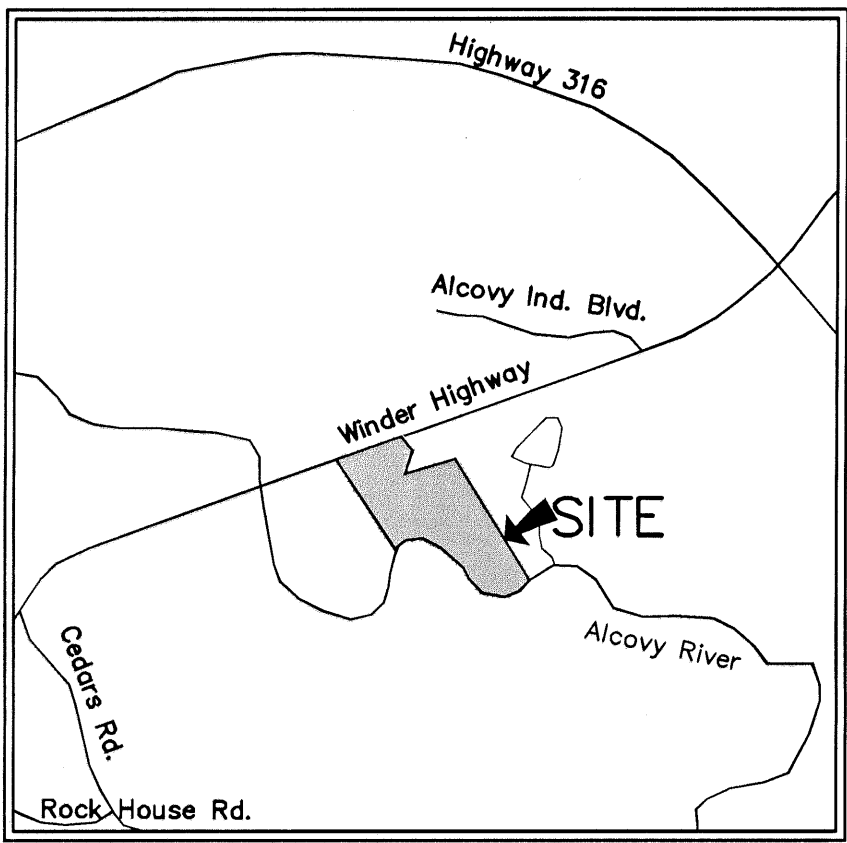
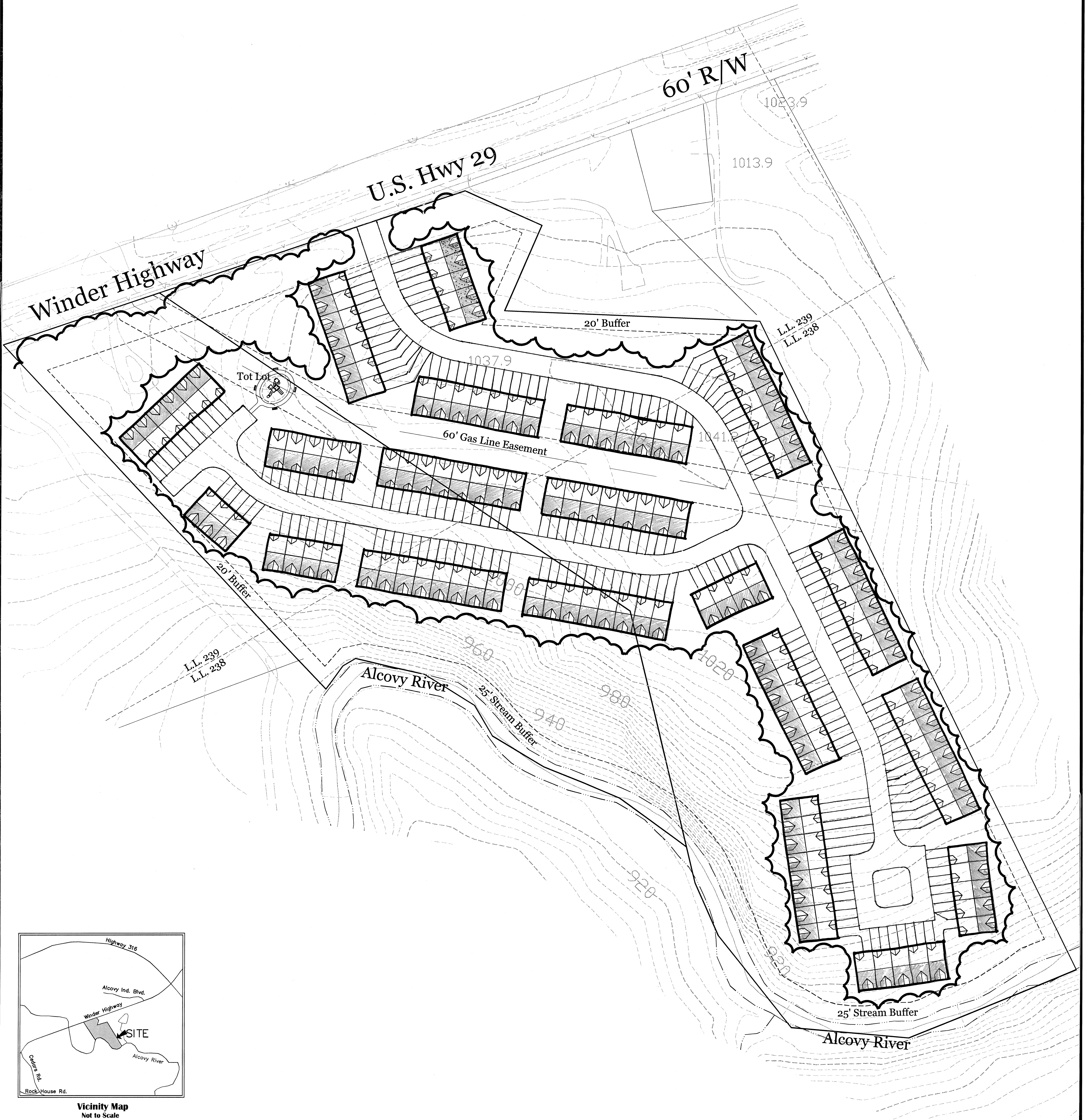
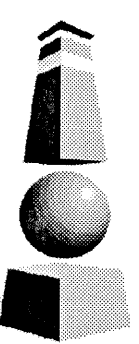


Rezoning Exhibit for: Winder Highway Tract

Land Lots 238 & 239 5th District
Gwinnett County, Georgia Scale: 1"=50'
February 10, 2004



Vicinity Map
Not to Scale



LANDMARK
DESIGN ASSOCIATES

4455 COMMERCE DRIVE SUITE 103
BUFORD, GA 30518
t.678-546-1675
f.678-546-1676

SITE DATA

EXISTING ZONING:	RA-100
PROPOSED ZONING:	RM 8
PROPOSED VARIANCES:	REDUCE BUFFERS TO 20'
SITE AREA:	16.22 ACRES
OPEN SPACE:	8.8 ACRES
PERCENT OPEN SPACE:	54 %
SITE DENSITY :	8.0 U/A
TOTAL UNITS:	130



0 50 100 150 200

GRAPHIC SCALE IN FEET